

STRAIN NAME: N/A
Matrix: CBD Hemp Oil 750

Equine Omega Gold
Ranger Texas 76470
832-465-8107

<http://www.equineomegagold.com>



SAMPLE: D803035-01

Harvest/Lot ID: 8066143

Batch#: 8066143; Batch Size: N/A

Ordered: 03/25/2018; Sampled: N/A

Completed: 04/02/2018; Expires: 04/02/2019

Sampling Method: Client Method



- Pesticides - NT
- Microbials - NT
- Mycotoxins - NT
- Heavy Metals - NT
- Terpenes - NT
- Residual Solvents - NT
- Filth - NT
- Water Activity - NT
- Moisture - NT

Cannabinoids

Analyte	Weight (%)	mg/g	RPD%
THCa	<LOQ	<LOQ	
D9-THC	<LOQ	<LOQ	
D8-THC	<LOQ	<LOQ	
THCV	<LOQ	<LOQ	
THCVa	<LOQ	<LOQ	
TOTAL THC	<LOQ	<LOQ	
CBDa	<LOQ	<LOQ	
CBD	2.91	29.05	
CBDV	0.01	0.08	
CBDVa	<LOQ	<LOQ	
TOTAL CBD	2.91	29.05	
CBN	<LOQ	<LOQ	
CBGa	<LOQ	<LOQ	
CBC	<LOQ	<LOQ	
TOTAL CANNABINOIDS	2.91	29.13	

Cannabinoids

0.00%

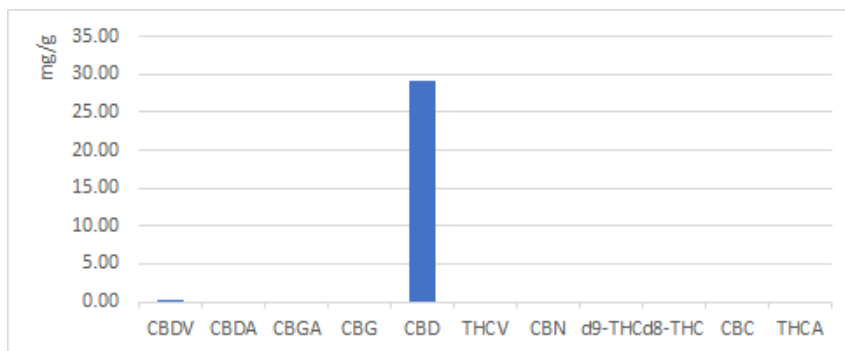
Total THC

2.91%

Total CBD

Total THC= THCa x 0.877 + d9-THC

Total CBD= CBDa x 0.877 + CBD





STRAIN NAME: N/A
Matrix: CBD Hemp Oil 750

SAMPLE: D803035-01

Harvest/Lot ID: 8066143

Batch#: 8066143; Batch Size: N/A

Ordered: 03/25/2018; Sampled: N/A

Completed: 04/02/2018; Expires: 04/02/2019

Sampling Method: Client Method

**Microbial Test Results** - Analysis Method: SOP.T.40.043

Escherichia Coli (Limit: Absent in 1g)	Not Detected
Salmonella (Limit: Absent in 1g)	Not Detected
Aspergillus fumigatus (Limit: Absent in 1g)	Not Detected
Aspergillus flavus (Limit: Absent in 1g)	Not Detected
Aspergillus niger (Limit: Absent in 1g)	Not Detected
Aspergillus terreus (Limit: Absent in 1g)	Not Detected

Cannabinoid Profile Test Results - Analysis Method: SOP.T.30.050, SOP.T.40.020

Full spectrum cannabinoid analysis utilizing High Performance Liquid Chromatography with UV detection (HPLC-UV). (Method: SOP.T.30.050 for sample prep and Shimadzu High Sensitivity Method SOP.T.40.020 for analysis. LOQ for all cannabinoids is 1 mg/L). D9-THC, THCA, CBD, CBDA are State accredited analytes, the rest are "info only."

Microbiological testing for Fungal and Bacterial Identification via Polymerase Chain Reaction (PCR) method consisting of sample DNA amplified via tandem Polymerase Chain Reaction (PCR) as a crude lysate which avoids purification. (Method SOP.T.40.043) If a pathogenic Escherichia Coli, Salmonella, Aspergillus fumigatus, Aspergillus flavus, Aspergillus niger, or Aspergillus terreus is detected in 1g of a sample, the sample fails the microbiological-impurity testing.